

Lacombe

REGIONAL TOURISM

2026 Travel Guide



LACOMBETOURISM.COM



PLAY ALL DAY AT KRAAY!

Your destination for world famous adventures and farmtastic fun all season long. Only 5 minutes West of Lacombe.



OVER 50 ACTIVITIES & ATTRACTIONS
LEARN MORE AT KRAAYFAMILYFARM.COM

Time to Explore!

- 7 - 13 | Communities to Visit
 - 6 Lacombe County
 - 7 Town of Bentley
 - 8 City of Lacombe
 - 10 Village of Clive
 - 11 Village of Alix
 - 12 Hamlet of Mirror
- 14 - 19 | Meet the Neighbours
- 20 - 31 | Discover
 - 21 Murals
 - 22 Antiquing Trail
 - 23 History
 - 24 Shopping Spots
 - 26 Farmyard Feast
 - 28 Culinary Spots
 - 30 Health & Wellness
 - 31 Annual Events & Festivals
- 32 - 38 | Experience
 - 34 Camping Spots
 - 35 Fishing Spots
 - 36 Golfing Spots
 - 38 Beaches & Lakes
- 40 - 49 | Explore
 - 41 Hiking Trails
 - 42 Seasonal Activities
 - 47 Accommodations
 - 48 Route 12
- 50 | Become a Member



Milly Oak Cafe & Catering - City of Lacombe



Cull Lake SUP School - Lacombe County



The Loft - Nowco Home Hardware - City of Lacombe



DISCOVER
EXPERIENCE
EXPLORE

- Arts & Culture
 - Outdoor Adventures
 - Culinary Spots
 - Farmyard Feasts
 - Annual Events & Festivals
- ... and *much* more!

LACOMBE REGION

Plan your visit in the Lacombe Region, where we will help you make your very own itinerary.

Discover all the hidden gems of the area! Insider tip: you will have to plan more than one trip to all of them!



GETTING HERE

It's time to explore Central Alberta! Lacombe County is located between the cities of Calgary and Edmonton, connected by the Queen Elizabeth II Highway (QEII or Highway 2).

The area is home to three large lakes: Sylvan Lake, Gull Lake, and Buffalo Lake. Along with the lakes is the addition of Medicine Lodge Ski Hill.

It is home to these communities:
City of Lacombe
Town of Bentley
Village of Clive
Village of Alix
Hamlet of Mirror

Lacombe is built for touring and exploring, so grab your family or friends, jump in the car, and start experiencing what life is like in Central Alberta.

DRIVE FROM	DISTANCE	ESTIMATED TIME
CALGARY TO LACOMBE	175 KM	1 HR 48 MIN
EDMONTON TO LACOMBE	126 KM	1 HR 27 MIN
RED DEER TO LACOMBE	30 KM	25 MIN

INSIDER TIP:
Check 511 Alberta for updated road conditions and closures.



Country roads lead to beautiful destinations!



SHARE YOUR VISIT

Visit our website:
lacombetourism.com

Reach out on social >>
@lacombe_tourism
@LacombeRegionalTourism

Share your journey with us using these hashtags for a chance to be featured!
#LacombeRegionalTourism
#VisitLacombeRegion

Lacombe

REGIONAL TOURISM

A gateway to Natural Wonders

Explore Nature's Beauty

Lacombe County is home to breathtaking landscapes and scenic trails that offer something for every outdoor enthusiast.

Trails for Every Explorer: Stroll through serene paths at County parks like Burns Nature Park, Mary & Cliff Soper Natural Area, and Kuhnen Park. Whether you're hiking, cycling, or enjoying a leisurely walk, these trails showcase Alberta's natural beauty all year long. Or grab your frisbee for some disc golf at Anderson Park.

Beach Adventures: Relax on the sandy shores of Gull Lake at Sandy Point Beach, the perfect spot for swimming, picnicking, and family fun. The trail from Sandy Point connects to Gull Lake campgrounds and Bentley, making it ideal for walkers and cyclists alike.

Agricultural Delights

Lacombe County is a hub for agriculture, offering countless ways to experience the region's rich farming heritage.

Farm Stands & U-Picks: Taste the freshness of Alberta by visiting local farm stands or picking your own produce.

Greenhouses & Tours: Explore vibrant greenhouses and learn about sustainable farming through guided tours.

Seasonal Events: Don't miss local harvest festivals and markets that celebrate the County's farming traditions.

Unwind by the Lakes

With three stunning lakes - Sylvan Lake, Gull Lake, and Buffalo Lake - Lacombe County is a top destination for water lovers. Spend summer days relaxing on the beach or floating across calm waters. In winter, these lakes transform into playgrounds for ice fishing, skating, and other cold-weather adventures.

Adventure Awaits

From peaceful getaways to action-packed days, Lacombe County offers the perfect blend of rural charm and outdoor excitement. With endless trails, vibrant communities, and unique attractions, every visit promises a new discovery.



Situated in the heart of Alberta between Calgary and Edmonton, Lacombe County is a haven of wide-open spaces, charming communities, and endless opportunities for outdoor exploration. Whether you're seeking relaxation or adventure, our region offers something for everyone.

CONTACT LACOMBE COUNTY:
info@lacombecounty.com



Enjoy the scenic drive from the prairies to the beautiful landscape of sunset hills through Highway 12. As you travel West in Lacombe County, skirting the South shore of Gull Lake, you break over the crest of the height of land just West of the lake into the gateway of the famous Blindman Valley. There, before you, lies the Town of Bentley.

Strive for an authentic road trip by visiting Central Alberta's hidden gem. From open sky views to locally-owned stores, Bentley is a place worth discovering!

FACILITIES OF NOTE:

- Bentley Arena (403) 748 - 4404 | 5218 50 St, Bentley, AB
- Bentley Municipal Campground (403) 748 - 4404 | 5102 50 Ave, Bentley, AB
- Bentley Curling Club (403) 740 - 4303 | 5218 50 St, Bentley, AB
- Medicine Lodge Ski Hill (403) 748 - 2025 | 11 kms West of Bentley
- Blindman Valley Agricultural Society Building (403) 598 - 1275 | 5202 53 Street Close, Bentley, AB

BUSINESS DEVELOPMENT CONTACT

Marc Fortais
Chief Administrative Officer
mfortais@townofbentley.ca | (403) 748 - 4044



DISCOVER
Shop at the stores and boutiques along 50th Ave

EXPERIENCE
Explore the Medicine Lodge Ski Hill

EXPLORE
Ride your bike from the Town of Bentley to Gull Lake



Town of Bentley

Bentley Museum

If you are looking for a perfect getaway in Alberta, look no further than Lacombe, conveniently situated between Calgary and Edmonton. Lacombe is a charming city with a rich history and culture, where you can enjoy great local restaurants, historical buildings with Edwardian architecture, and three museums that showcase the City's heritage.

Some must-see highlights of Lacombe include the Michener House Museum, the Lacombe Blacksmith Shop, and the Flatiron Building Museum, all showcasing the community's deep connection to the past. Come and be amazed by the World's Largest Lure at Len Thompson Fish Pond, visible from Highway 2A. The pond is stocked with rainbow trout and has an accessible fishing dock, a picnic area, and a playground for kids.

Lacombe is a wonderful destination for anyone who appreciates history, art, culture, community and nature. Come and discover why Lacombe is one of Alberta's best-kept secrets!

FACILITIES OF NOTE:

- Gary Moe Auto Group Sportsplex
5429 53 Street, Lacombe, AB
- Lacombe Kinsmen Aquatic Centre & Spray Park
5429 53 Street, Lacombe, AB,
- Parallax Energy Fish & Fetch Park
5409 37 Street, Lacombe, AB
- Michener Park Campground
- Lacombe Curling Club
(403) 782 - 6277
- Mary C. Moore Public Library
5214 50 Ave, Lacombe, AB
(403) 782 - 3433



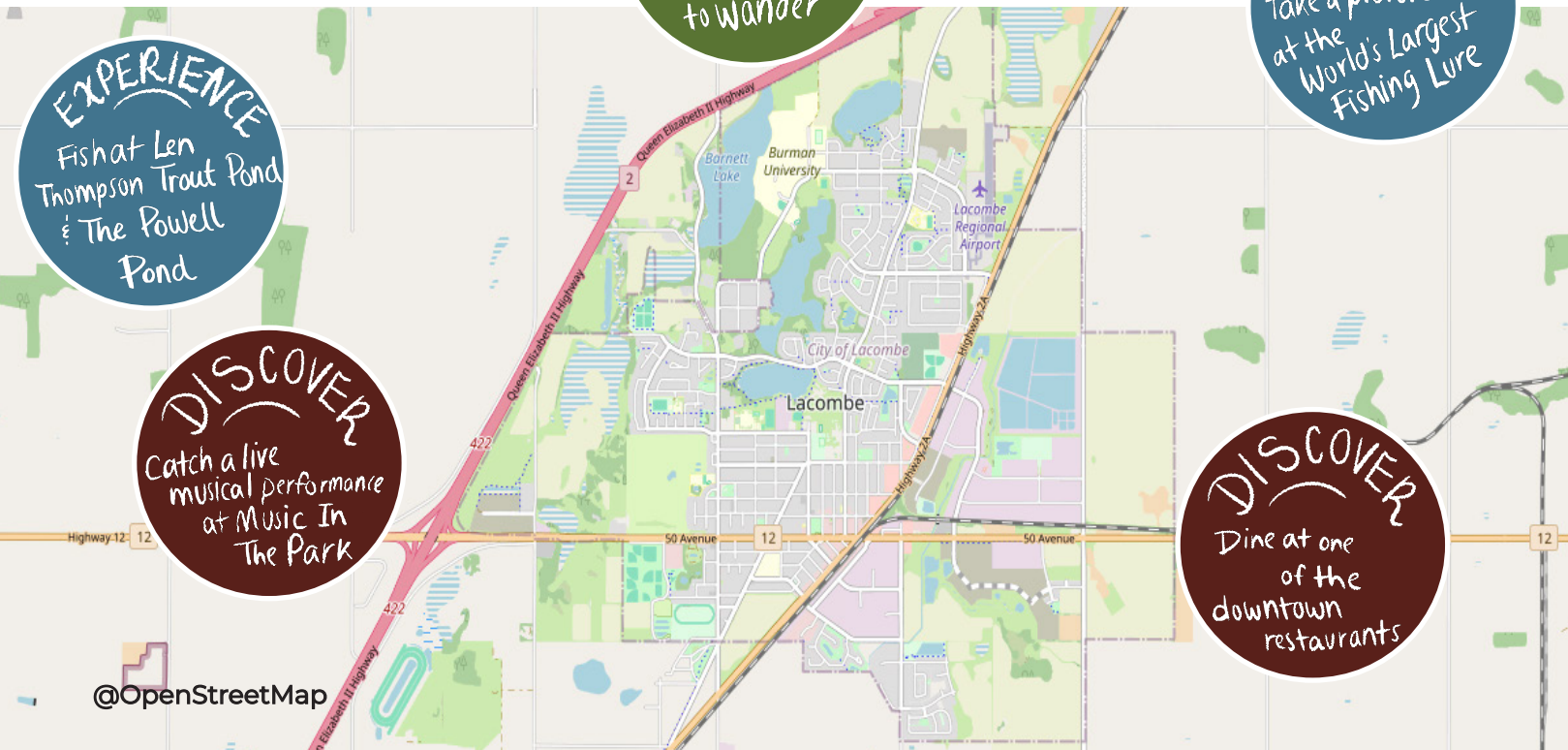
Visit the Heart of Lacombe: 5214 50 Ave

COMMUNITY ECONOMIC DEVELOPMENT

Steve Loutitt
sloutitt@lacombe.ca | (403) 506 - 4223

EXPLORE
Find a path or trail in the city to wander

EXPERIENCE
Take a picture at the World's Largest Fishing Lure



Time for a trip to Lacombe!



Whether you live in the City of Lacombe, or you are a visitor on a daytrip, road trip, or spending a weekend there is always something waiting to be explored!

Did you know? The City of Lacombe is the Mural Capital of Alberta!

Fun things to do with the whole family, for free:

- Walk or roll along the paths and trails - see page 41
- Experience annual events like Lacombe Days, Canada Day, or Light-Up Lacombe - see page 31
- Snag a photo in front of the World's Largest Fishing Lure (Len Thompson Dr), the Heart of Lacombe (5214 50 Ave), and keep your eyes out for other local creations like carved works of art, pinecones, and handpainted murals
- Take a self guided mural tour
- Bring a chair and enjoy Music In The Park during the Summer months (5214 50 Ave)
- Visit a local community centre like the Mary C. Moore Public Library and the Lacombe Kinsmen Aquatic Centre & Spray Park - there are often fun family friendly activities to participate in
- Take a stroll of historic downtown Lacombe, filled with beautiful buildings full of character

Did you and the kids do one of the above listed items? Share a snap of your adventures with us!

Have more time to explore? Stay awhile! There are plenty more hidden gems you need to visit so call up a friend and make a plan.

- From boutique spots to vintage and antique finds, the local shops will have you looking at each and every shelf that has been carefully displayed with items. (See page 22 for your antiquing trail)
- Savour a taste of local: whether you are looking for a quick coffee stop or snack, to a small lunch, or the works there is a spot for you! The city is filled with cafes and restaurants waiting with your next order. (Find more on where to eat on page 28 & 29)
- Keep on top of your health and wellness even when on the go. From spots to do your hair and nails, facials and deep tissue massages, and shops to restock the to-go bag with gluten free alternatives. (See page 30 for more)

Camping Spots: see page 34

Golfing Spots: see page 36

Accommodations: see page 47

Happy wanderings in the City of Lacombe!



VILLAGE OF CLIVE

The Village of Clive is a quaint agricultural community located in Central Alberta just 15 minutes East of the City of Lacombe and only 30 minutes away from the City of Red Deer. It's an affordable ideal spot to enjoy country living and has quick access to all amenities.

Explore the Legacy Walking Trails! These 1.6 km self-guided Legacy Walking Trails enhance the village, offering a safe alternative for family recreation while learning about the history of Clive in an interactive manner.

The Legacy Walking Trails feature historical bronze plaques placed at points of interest and at heritage sites. The trail system provides an open gallery of community murals, heritage family display beds and veterans commemorative gardens.

FACILITIES OF NOTE:

- Clive Arena
- Clive Memorial Curling Rink
- Clive Community Hall
- Outdoor Multi-Season Rink

BUSINESS DEVELOPMENT CONTACT

Carla Kenney, Chief Administrative Officer
admin@clive.ca | (403) 784 - 3366
5115 50 St Box 90, Clive, AB, T0C 0Y0



DISCOVER
Explore the Fairy Door Trail

Fairy doors to be discovered!



The Village of Clive welcomes you!

EXPLORE
Take a stroll of the Legacy Walking Trails

EXPERIENCE
Visit a traditional Sweet lodge

DISCOVER
Visit during the village wide garage sale



VILLAGE OF ALIX

The Village of Alix is located in the heart of Central Alberta's Parkland 45 km East of Hwy 2 on Hwy 12.

Small in size but big in lakeside living, we invite you to experience the natural surrounding the village has to offer. The village is nestled beside a beautiful lake that is surrounded by a 6.3 km nature trail full of wildlife. The Alix Lake Campground is also located on it's shores with 11 powered campsites, sand beach with playground, day use area, and nearby boat launch.

The Village of Alix also supports a thriving downtown, that is easy to walk through with boutique shops and antique shops waiting for you to explore.

FACILITIES OF NOTE:

- Alix Community Hall
- Alix Lake Campground
- Alix Public Arena
- Alix Public Library
- Alix Wagon Wheel Museum

BUSINESS DEVELOPMENT CONTACT

Chelsie Giesbrecht - Economic Development
cgiesbrecht@villageofalix.ca | (403) 747 - 2495

Tanya Meston - Development Officer
tmeston@villageofalix.ca | (403) 747 - 2495

Alix Village Office
4849 50 St, Alix, AB, T0C 0B0



Find the Village of Alix Gator!



Take a stroll of main street

EXPERIENCE
Enjoy a day on the lake wave surfing or tubing

DISCOVER
Go antique hunting in the downtown businesses

EXPLORE
Walk the Alix Nature Trail

DISCOVER
Snap a photo next to the Alix Gator if you can find him

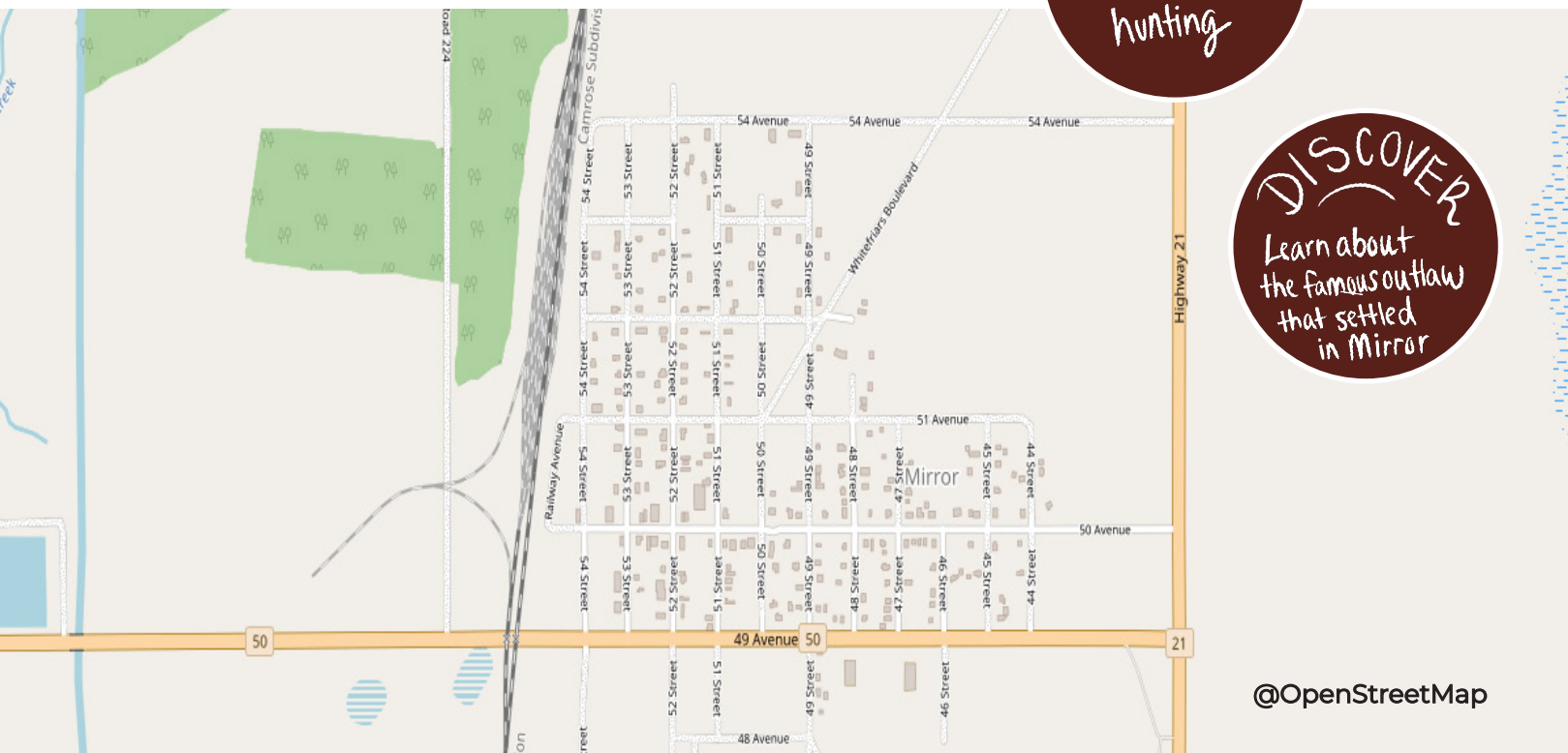
HAMLET OF MIRROR

Mirror is a hamlet in Lacombe County within Central Alberta. It is located at the junction of Highway 21, East from the City of Lacombe and Northeast from the City of Red Deer. This historic railroad community hosts a spattering of small local treasures including boutique shops and cafes near the West end of Buffalo Lake.



DISCOVER
Go antique hunting

DISCOVER
Learn about the famous outlaw that settled in Mirror



@OpenStreetMap



7102 52 Street, Unit 20
Lacombe, Alberta
(403) 786-9229

REDSBIKESHOP.CA

Lake Life Under the Stars!

ROCHON SANDS PROVINCIAL PARK & CAMPGROUND

Reserve at rochonsands.net/rspp

NARROWS PROVINCIAL RECREATION AREA & CAMPGROUND

All Sites First Come First Serve

403.742.4338
park@rochonsands.net
Rochon Sands - rochonsands.net/rspp
Narrows - rochonsands.net/npra

Infrared Sauna

Red Light Therapy

Innervate Massage

Therapeutic, Deep Tissue
Sports Recovery/Injury
Reflexology
Myofascial Therapy & Cupping
Manual Osteopathy
Neurokinetic Therapy

Let us find the root of your tension!

Direct Billing Available

BOOK ONLINE AT:
WWW.INNERVATEMASSAGE.COM

A-5017 50ST, LACOMBE, AB
403.596.6267

MEET THE NEIGHBOURS

TOWN OF STETTLER

Discover the Charm of Stettler

Nestled in the heart of Alberta, Stettler is where small-town charm meets unforgettable experiences. Whether you're drawn by history, the outdoors, or a relaxed getaway with plenty to explore, you'll quickly discover why visitors love returning again and again.

Step back in time aboard an antique steam train - complete with an old-fashioned train robbery - for an experience you won't find anywhere else. Wander Stettler's historic downtown, where locally owned boutiques, cozy cafés, and welcoming restaurants showcase the community's creative spirit and warm hospitality. Just steps away, the Stettler Town & Country Museum invites you to explore Alberta's pioneer past, with interactive exhibits, mini golf, and one of the province's largest collections of historic buildings.

Outdoor adventure is always close at hand. Spend the day fishing nearby lakes, tee off at a scenic golf course, or enjoy year-round recreation at local arenas and trails. Wide-open prairies, abundant wildlife, and breathtaking night skies - including the chance to catch the northern lights - make Stettler a destination for nature lovers in every season.

From lively summer festivals and farmers' markets to rodeos, live music, and festive holiday celebrations, Stettler knows how to bring people together. No matter when you visit, there's always something happening. Plan your visit to Stettler - a place where history, adventure, and heartfelt hospitality come together, and every season offers a new reason to stay awhile.



EXPERIENCE
Join the fun & visit during Canada Day and StettlerFest

Enjoy a local event this Summer



Plan a festive adventure!

TOWN OF ROCKY MOUNTAIN HOUSE & CLEARWATER COUNTY

With a blend of history, art, and outdoor adventure, Rocky Mountain House and Clearwater County are must-visit destinations for any road trip.

Situated along the North Saskatchewan River, Rocky Mountain House is rich in history, offering immersive experiences at the Rocky Mountain House National Historic Site. Here, you can step back in time to the fur trading era of the Hudson's Bay Company and The North West Company, hike scenic trails, and take part in engaging programs and special events. For a truly unique experience, spend the night in an authentic tipi and wake up to the sights and sounds of nature.

Outdoor enthusiasts will find endless adventure, from ATV and bike trails to hiking, canoeing, and fishing. Take in the region's natural beauty with HeLa Ventures, offering guided canoeing and rafting experiences along the river.

Nearby, Crimson Lake Provincial Park is perfect for camping, canoeing, kayaking, and fishing. If you're looking for a more relaxed outing, explore local shops, breweries, and cafés for a taste of small-town charm.

In winter, cross-country skiing and snowshoeing are popular activities, while the 400-meter outdoor skating oval provides a scenic and memorable way to enjoy the season.

Whether you're drawn to history, culture, or adrenaline-pumping outdoor experiences, Rocky Mountain House offers something for every explorer.



Admire the evening sky!



Outdoor exploration awaits



Time for a roadtrip!



HeLa Ventures white water rafting

Town of Stettler

EXPLORE
Visit the Stettler Tradeshaw in April!

DISCOVER
Ride the Alberta Prairie Railway

White Sands Phasemback G&CC
Donalds
Bashaw
Camrose

Botha
Gadby
Makare
Castor
Coronation

7 - Stettler Board of Trade
6606 - 50 Avenue | 403-742-3181 | stettlerboardoftrade.com

1 - West Stettler Park
Located on West Side of 62 Street | Mount Stettler, playground, spray park, walking trails, catch and release fishing, Entertainment in the Park (Wednesday evenings late June through August)

2 - Stettler Town and Country Museum
6502 - 44 Avenue | 403-742-4534 | Alberta's 5th Largest Pioneer Museum (Open Daily May to September) stettlermuseum.com

3 - Stettler Recreation Centre
6202 - 44 Avenue | 403-742-4411 | Aquatic centre, twin ice arena, The Hub Seniors Centre, fitness and aquatic centre (Open Year Round) stettler.net

4 - Stettler Golf & Country Club
4701 - 61 Street | 403-742-2001 | Family friendly golf in the heart of Stettler, 9 Hole Course, Rentals, Clubhouse and Lounge stettlergolfandcountryclub.com

5 - Heartland Bowl
4601 - 59 Street | 403-742-3149 | 8 Lanes, Glo Bowl, League play, concession (Open Year Round - Call to book)

7 - Alberta Prairie Railway Excursions
4611 - 47 Avenue | 1-800-282-3994 | Vintage railway excursions taking you back in time. Entertainment, shopping, souvenirs, lounge and concession available. (Excursions May to October, November and December) absteamtrain.com

8 - P&H Elevator
Corner of 46 Street and 47 Avenue | 403-740-4799 | Historically reconstructed 1909 Elevator and Feedmill, interpretive displays and events (Open Year Round) stettlergrainelevator.com

9 - Stettler District Agricultural Society
4516 - 52 Street | 403-742-6288 | Indoor and outdoor ag grounds offering annual events, rodeos and farmers' markets (Open Year Round) stettlersociety.com



Go glamping



Fill your day with an adventure

MEET THE NEIGHBOURS



Even more things to do, see, and explore!

In your travels make sure to include time to visit spots just beyond the Lacombe Region - like these locations listed below! Plan a road trip for a family fun adventure, whether it be a day trip, a weekend visit, or a spur of the moment activity, there is always time to make some new memories along the way!

📍 PONOKA COUNTY

Rimbey Kinsmen Motorsports Park - Central Alberta Raceways

1/4 mile Drag Strip, 1/8 mile Dirt Oval, Mud Racing, Mega Trucks, Idiots in Cars. 6700 40 St, Rimbey, AB | (855) 746 - 2397 @caraceways

Rimbey Home Hardware

Seasonal items, pet supplies, housewares, hardware, paint, garden centre, and more! 4813 50 Ave, Rimbey, AB | (403) 843 - 2526 @rimbeyhomehardware

📍 RED DEER COUNTY

Canyon Ski Hill

Alberta's Largest Non-Mountain Resort and Home of Canyon Adventure Park. 38433 Range Rd 264A, Red Deer County (403) 346 - 5588 | canyonski.ca @canyonskiresort

DNA Gardens

U-pick & wine tours, fruit orchard, farm store, cafe, and more! 35344 RR 230, Elnora, AB | (403) 773 - 2489 @dnagardens | dnagardens.ca

(403) 773-2489
DNA GARDENS
 dnagardens.ca

AWARD WINNING WINES
 U-PICK AND FARM STORE NOW OPEN
 WINE TOURS BAT WALKS
 LONG TABLE AND BRISKET DINNERS
 CAMPING WEDDINGS
 YOGA RETREATS FOOD EVENTS

SHELLEY'S SUN & SAND TRAVEL

HELPING YOU TRAVEL BETTER

Dreaming of your next escape? We take the stress out of travel. Personalized travel planning with real support from real people.

403-350-3259
 shelley@sunandsandtravel.ca

SCAN TO ENTER: WIN A CRUISE!

Rimbey Home Hardware
 Rimbey Home Hardware
 4813 50 Ave
 Rimbey, Alberta T0C 2J0

THANK YOU!

Featured brands!

EXPLORE. CELEBRATE. UNWIND.

Stettler

destinationstettler.com

HIGHWAY 2A CORRIDOR

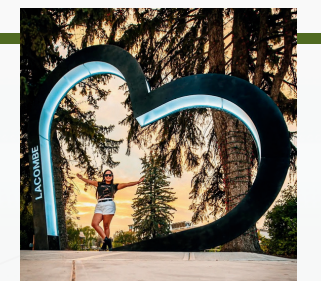
Time to slow down and take in all the Highway 2A Corridor offers while visiting the Lacombe Region!

What awaits? An alternate route running North and South - parallel to the QEII - connecting the City of Lacombe, the Lacombe County, and the Town of Blackfalds. Inviting you to trade in the busy freeway and immerse yourself in the local and regional history of the communities, discover culinary gems and shopping spots, visit murals and art installations, and take a breath of fresh air along the way with a wander of the numerous parks and trails!

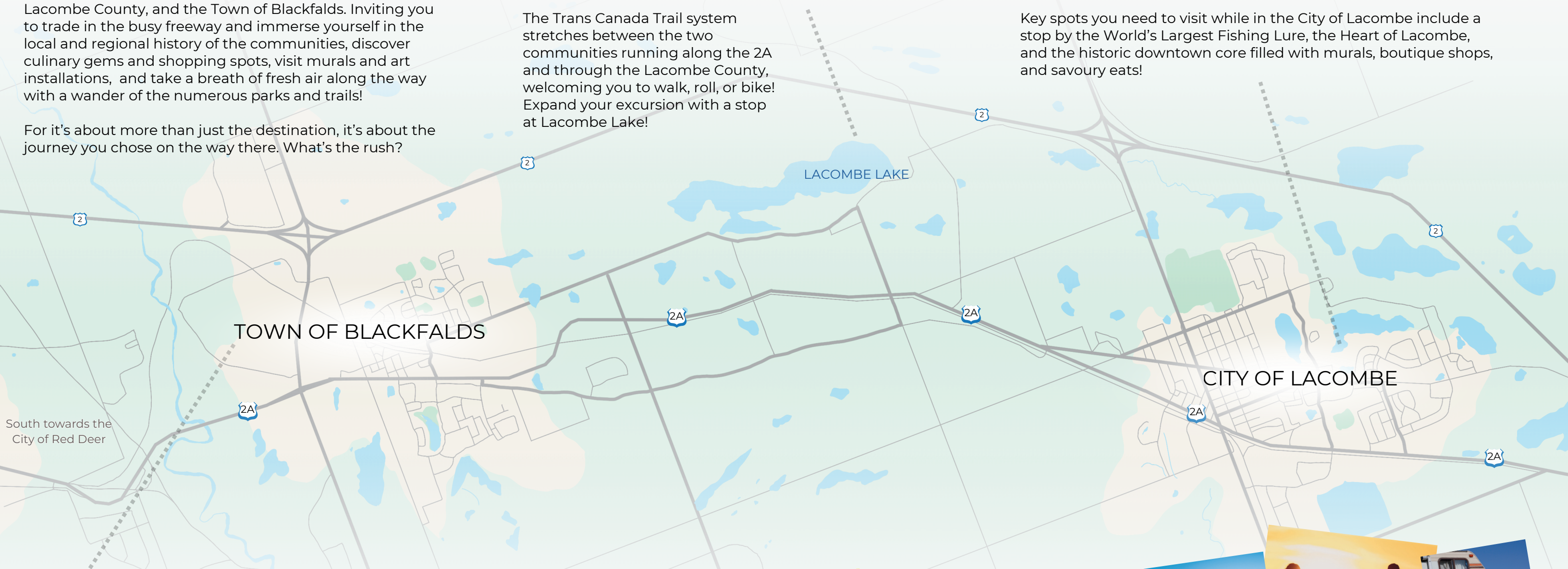
For it's about more than just the destination, it's about the journey you chose on the way there. What's the rush?



The Trans Canada Trail system stretches between the two communities running along the 2A and through the Lacombe County, welcoming you to walk, roll, or bike! Expand your excursion with a stop at Lacombe Lake!



Key spots you need to visit while in the City of Lacombe include a stop by the World's Largest Fishing Lure, the Heart of Lacombe, and the historic downtown core filled with murals, boutique shops, and savoury eats!



South towards the City of Red Deer



Things to do in and around the Town of Blackfalds for the whole family to explore include stopping by the Abbey Centre, visiting the Parallax Energy Bike Skills Park, and finishing off your visit with a wander of Mary Cliff Soper Park.



Sunny day adventures are just an app away!



Download Driftscape



DISCOVER

DINE, SHOP, & EXPERIENCE LACOMBE'S CULTURE

Escape the hustle and bustle with a trip to visit the hamlets, villages, towns, and city that make up the Lacombe Region.

Here you can find a diverse mix of old and new, complete with rolling farmlands and home cooked meals. Visit boutique shops mixed with thrift shops, filled to the brim with hidden treasures.

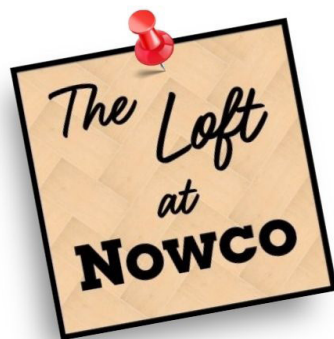
NOWCO

Home
hardware

4922 50 Ave Lacombe, AB T4L 1Y1

COME UPSTAIRS

For A New Shopping Experience



Step into a world of delightful treasures where every corner is filled with unique giftware, stunning home decor, cozy bedding, innovative kitchen gadgets, adorable baby items, and so much more! Whether you are celebrating a special occasion or just want to brighten someone's day, we have something for everyone.



TOP 5 INSTAGRAM WORTHY MURALS!



The Clydesdale Horses
Created by John Ellenberger
City of Lacombe

This mural pictures the Clydesdales from the Lacombe Experimental Station (now Lacombe Research and Development Centre) breeding program being paraded on the grounds of the station during their popular Field Days in the 1930's.



Bentley Mural
Created by Lauren Cowles
Town of Bentley

This mural was sponsored by Merry's Mercantile and shows the beautiful land we live in. Lauren created this mural to represent all there is to love about Bentley, AB. Make sure you take a selfie with the butterfly!



Lacombe Performing Arts Centre Murals
Created by Alixandra Jade (left photo) and LALA (right photo)
City of Lacombe

Explore the newest mural additions! Be sure to take a walk of the interior and exterior of this building to see all the creations this facility houses!



City Hall Mural - Eyes of the Wisdom
Created by Gordon Wesley
City of Lacombe

Lacombe sits amongst many former First Nations and Métis travelling and trade routes, and this full-colour natural landscape mural depicts our area before the arrival of the first European Settlers.

The addition of this mural to City Hall enhances the building's exterior, making it a stunning, vivid reminder of our region's history. Unveiled on September 23, 2025.

Looking to discover more creative displays by local artists?

Throughout the Lacombe Region there are murals, works of art, and even sculptures to be discovered along the way! Don't forget to look both outdoors and indoors - for there is art everywhere!

In this guide: look at each of the community pages for the facilities of note, as visiting these featured spots are an expansion of all the hidden gems you need to add to your list of stops!

Visiting the City of Lacombe? Take a self guided mural tour! Find out more by visiting the City of Lacombe website: <https://www.lacombe.ca/213/Lacombe-Art-Collection-Murals>



ANTIQUING TRAIL

Love to unearth hidden treasures? These shops are just for you! From thrifting and consignment shops to antique locations, there is sure to be something waiting to be discovered along the way! Time for a road trip.

📍 HAMLET OF MIRROR

Mirror Market
Second hand treasures
5010 50 Ave | (403) 304 - 4791
@TheMirrorMarket

📍 VILLAGE OF ALIX

Alix Village Shoppe
Thrift Store
4927 Main St, Alix | (403) 747 - 2929

Ye Olde Nook
4904 50 St, Alix | (403) 563 - 9001

Trinket Shop
4920 50 St, Alix | (403) 704 - 5217

📍 VILLAGE OF CLIVE

Elite Treasure Chest
Thrift Store
4904 50 St | (403) 877 - 7089

📍 CITY OF LACOMBE

And Everything Nice Antiques & Collectibles
Antiques & Vintage Collectibles
5403 50 Ave | (403) 782 - 3191
andeverythingniceantiques.ca

Timeworn Charm
5105 50 Ave | (403) 782 - 6747

Building Blocks Thrift Store
5111 50 Ave | (403) 782 - 9511

Castaways
4420 Heritage Way | (403) 782 - 1456

Juff-E-Nuff
Antiques & Collectibles
4120 55 Ave | (403) 318 - 3010

DISCOVER LACOMBE COUNTY'S HISTORY

Take a step back in time exploring the history of the Lacombe Region, and get the whole family involved!

- **Lacombe Blacksmith Shop Museum**
5020 49 Street, City of Lacombe
(403) 782 - 3933
lacombemuseum.com

- **Michener House Museum & Gardens**
5036 51 St, City of Lacombe
(403) 782 - 3933
lacombemuseum.com

- **Flatiron Building Museum**
5005 50 Ave, City of Lacombe
(403) 782 - 3933
lacombemuseum.com

- **Alix Wagon Wheel Museum**
4912 50 St, Village of Alix
(403) 358 - 9848
alixwagonwheelmuseum.ca

- **Bentley Museum**
4929 51 Ave, Town of Bentley
(403) 304 - 0353
bentleyagsociety.com/museum.html

- **Mirror & District Museum**
4910 53 St, Hamlet of Mirror
(403) 788 - 3828
centralabmuseums.ca/mirror-and-district-museum



Ph: 403-782-3191
aen@telus.net

5403-50 Ave.
Lacombe, AB
T4L 1S6

Hours:
Noon to 5:30pm
Tuesday-Saturday

Candice Campbell: Owner/Operator
We Ship World Wide!

SHOPPING SPOTS

📍 CITY OF LACOMBE

Dutchess Flower Company
Plants and flower arrangements
5113 50 Ave | (403) 789 - 2018
dutchessflower.ca
@dutchessflowercompany

Reds Bike Shop
Get geared up for adventure
7102 52 St Unit 20 | (403) 786 - 9229
redsbikeshop.ca

Reds Source for Sports
Sports gear and equipment
5018 50 Ave | (403) 782 - 7357
sourceforsports.ca
@redssportslacombe

5024 General Store
Skateboard shopping and coffee
5024 50 St | (403) 786 - 1727
5024generalstore.myshopify.com
@5024generalstore

Elite Bridal and Fashion Boutique
Fashion and bridal shopping
4923 50 Ave | (403) 782 - 3312
eliteboutique.ca
@elitebridallacombe

Hannas Seeds
Garden centre open year round
5039 49 St | (403) 782 - 6671
hannaseeds.com

Lacombe Farmers Market
Shop local vendors Thursdays
lacombefarmersmarket.ca
(403) 318 - 8678
@lacombefarmersmarket

The Loft
Head upstairs and discover hidden treasures on the second level of the Nowco Home Hardware
4922 50 Ave | (403) 782 - 3022
@nowcohomehardware

Amazing Wonders Emporium
Where your happy place begins
20, 5230 45 St | (403) 782 - 6070
@amazingwondersemporium
wonders@a-w-e.ca

Lily & Lace
Affordable & trendy women's clothing, specializing in bridal, grad and formal wear
5019A 51 St | (403) 872-5031
@lilyandlace.store
lilyandlace.net

📍 TOWN OF BENTLEY

Earthy Accents
Plant and floral arrangements
5016 50 Ave | (403) 658 - 6262
@earthyaccents

Bentley Cycle Inc.
Bicycle lovers
4925 50 Ave | (403) 748 - 3176
bentleycycle.net
@bentleycycleinc

Koda's Kountry
Gift shop
5016A 50 Ave | (403) 302 - 1585
kodaskountry.ca
@kodaskountrybentley

Royal Feed & Farm Supply
Pending
5018 49 Ave | (403) 748 - 2538
@royalfeedandfarmsupply

Bentley Mercantile
Womens clothing, decor, and antiques
5014 50 Ave | (403) 658 - 2300
@TheBentleyMercantile

Tulips 'N Quilts
Quilting fabrics, threads, kits, patters, and more
5009 50 Ave | (403) 352 - 2881
tulipsnquilts.com
@tulipsnquilts

📍 TOWN OF ECKVILLE

Stacey's Happy Place
Books & coffee
5011 50 St | (403) 746 - 2256
@staceyshappyplace

JK Customs | Powers Enterprises
A two in one shop: Leather craft products & repairs | Computer sales & services
5114 50 St, Eckville, AB
(403) 746 - 0226
jkcustoms.ca | powersenterprises.com

That Hobby Guy
Rustic indoor and outdoors wood decor
@ThatHobbyGuy
(403) 506 - 6480
5013 50 St, Eckville, AB

📍 TOWN OF BLACKFALDS

Rose & Holly
Unique collective of locally sourced items
5009 Parkwood Rd Unit 102
@roseandholly21 | (403) 600 - 7568



Discover hidden gems and Lacombe County favourites! From flowers to fashion, we have so many shops there's sure to be at least one place you'll come back to again.



TULIPS 'N QUILTS
QUILTING FABRICS, THREADS, KITS, PATTERNS & MORE
TULIPSNQUILTS.COM

Planning a creative stop on your travels?

Tulips 'N Quilts is a cozy and creative stop for travelers - offering beautiful fabrics, embroidery treasures, vibrant tulips & warm hospitality!

Visit Tulips 'N Quilts on Mainstreet in Bentley, Alberta or shop online at anytime!



F A R M Y A R D

F E A S T

Where will you wander this year?

Use our handy list to enjoy a taste of country living.

Fahey's Fruit Stand & Garden Market

A family-owned fruit & produce stand
5314 51 Ave, Clive, AB
(403) 896 - 0984
@faheysfruitstand

Deep Roots Garlic Farm

A garlic farm & farm store
Range Rd 254, Lacombe, AB | (403) 350 - 4709
@visscherfarm
deeprootsfarmstore.com

Pik-N-Pak Produce Ltd.

Fresh local produce and 24/7 self serve store
28118 AB-12, Gull Lake, AB | (403) 748 - 4555
piknpakproduce.com
@piknpakproduceltd

Scholing's Produce Inc.

Fresh local potatoes since 1996
Farm store located along Hwy 2A, Lacombe, AB
(403) 782 - 7380

Koornneef Farms

Strawberry U-Pick/Pre-Pick operation
40217 Range Rd 10, Lacombe County, AB
(587) 377 - 7037 | koornneeffarms.com
@koornneeffarms

Billyco Junction Gardens

An organic fruit & vegetable farm
40110 RR260 Lacombe, AB | (403) 392 - 4892
@billycojunction1
billycojunction.com

Gull Lake Honey Company

Honey apiary & bison ranch
41113, Range Rd 282, Lacombe, AB
(780) 916 - 2262
@GullLakeHoney

DNA Gardens

Alberta orchard with prairie hardy fruit trees, wines,
liqueurs, and fruit products
35344 RR 230, Elnora, AB | (403) 773 - 2489
@dnagardens | dnagardens.ca

Take a day trip, or plan a weekend of adventuring!

Spend time making memories with the whole family.

DAY 1

Morning - Start your day in The Town of Bentley with a hot coffee from the Drop Coffee and Tea Shop before merging onto Highway 12. Your first stop on the Farmyard Feast is Koornneef Farms, a U-pick with sweet strawberries. Remember to bring a basket to carry your newly picked snacks.

Afternoon - Head North-East to the Gull Lake Honey Company for your next stop. This family farm specializes in the production of honey and has an authentic farm store. If you are lucky, they might even give you a tour of their honey production line.

Evening - Finish off your day by heading South to Summerland RV Resort. Park at your campsite and take the family over to Joe's Mini Golf - found right on site!

DAY 2

Morning - Enjoy a warm cup of coffee and a home-made breakfast at Tollers Bistro to start the day. Pack everything up, drive to Kraay Family Farm and experience what Farmtastic fun for all ages looks like, with over 50 attractions and amenities.

Afternoon - Get lunch at Kraay Family Farm before heading East to the Village of Clive for a visit to Fahey's Fruit Stand & Garden Market. Restock on your fresh fruit and produce before continuing your adventure towards the Village of Alix.

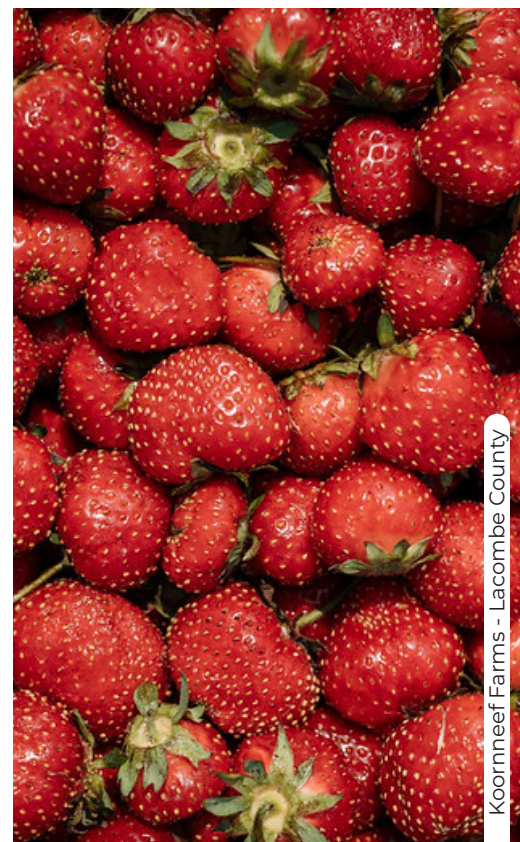
Evening - Spend the afternoon walking, playing or paddling at Alix Lake, and end your day at the Alix Lake Campground. Enjoy watching the sunset while enjoying some smores made at camp.



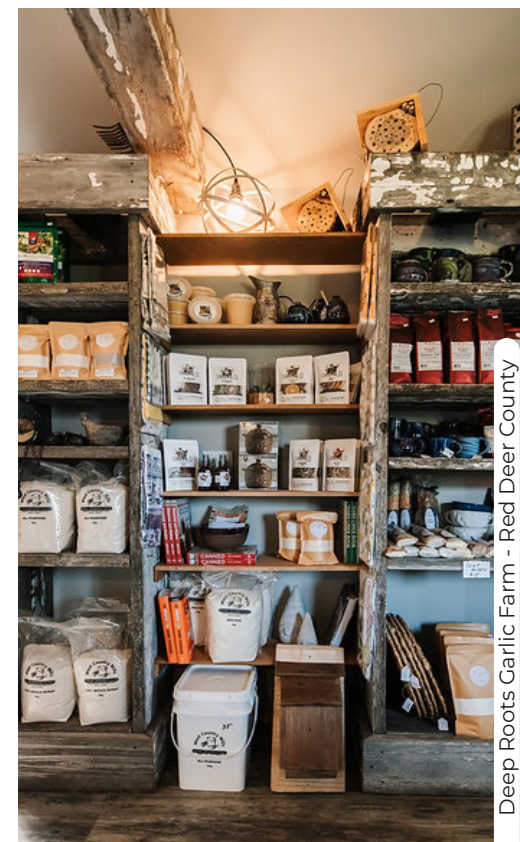
Fahey's Fruit Stand & Garden Market - Village of Clive



Gull Lake Honey Company - Lacombe County



Koornneef Farms - Lacombe County



Deep Roots Garlic Farm - Red Deer County



Billyco Junction Gardens - Lacombe County



Tollers Bistro - City of Lacombe

CULINARY SPOTS

Discover the Lacombe Region, filled with culinary gems! For the foodies on a road trip, there is always something waiting to be savoured!

Whether you're in the mood for a quick to-go order or a full dine in experience, there's sure to be a spot with your name on the menu!

Things you need to keep your eye out for when browsing the menus include the list of local brews, fresh baked bites, and Burger of the Month specials! You can also watch for special events on the socials of these spots, and make a day of it!

VILLAGE OF ALIX

Alix Hotel Cafe (Sally's Kitchen)

Homemade meals
493 50 St | (403) 747 - 2711
@sallyskitchenalix

TOWN OF BENTLEY

The Drop Coffee & Tea Shop

Hot drinks, pastries and light snacks
4921 50 Ave | (403) 896 - 9450
@TheDropCoffee&Tea
dropcoffee.shop

VILLAGE OF CLIVE

Prairie Fire Cafe & Lounge

Enjoy friends, enjoy life
5102 50 Street | (403) 910 - 6241
prairie-fire.ca | @prairie_fire_clive

CITY OF LACOMBE

Cilantro and Chive

An epic food and drink menu for lunch or dinner
5021 50 St | (403) 782 - 2882
cilantroandchive.ca
@cilantroandchive

Milly Oak Cafe and Catering

Coffee, hot breakfasts, sweet pastries
4735 49b Ave | (403) 885 - 6434
millyoak.com
@millyoakcafe

Totally Gluten Free Bakery

Gluten-free pastries, treats, and more
5100 Wolf Creek Dr #2 | (403) 789 - 8432
totallyglutenfree.ca
@totallyglutenfreebakerylacombe

Moe's Pizza Co.

Pizza, pasta, and salads
4914 50 Ave | (403) 789 - 3400
moespizzaco.ca
@moeslacombe

Tollers Bistro

Sweet pastries and good coffees
2-4801 63 St Bay 2 | (403) 786 - 8400
tollersbistro.com/menu
@tollersbistro

Blindman Brewing

Exceptional craft beer and Mexican food.
3413 53 Ave | (403) 786 - 2337
blindmanbrewing.com
@blindmanbrewing

Ugly's Pub & Grill

Pub eats, shareables, local brews, and live music
5010 50 St | (403) 782 - 0402
@uglyspubandgrill

Leto's Steakhouse and Bar

Sit down and savour together
4944 AB-2A | (403) 782 - 4647
letos.ca | @letos1980

A&W Lacombe

A family favourite for on the go
5520 Hwy 2A | (403) 782 - 2488
web.aw.ca

Sweet Capone's Italian Bakery and Cannoli Shop

Savour hand-crafted cannoli, signature espresso blends, and products from our family's cookbook
C2 - 4915 50 Ave | 22 - 5230 45 St
(403) 986 - 1501
sweetcapone.com | @sweetcapones



Tollers Bistro

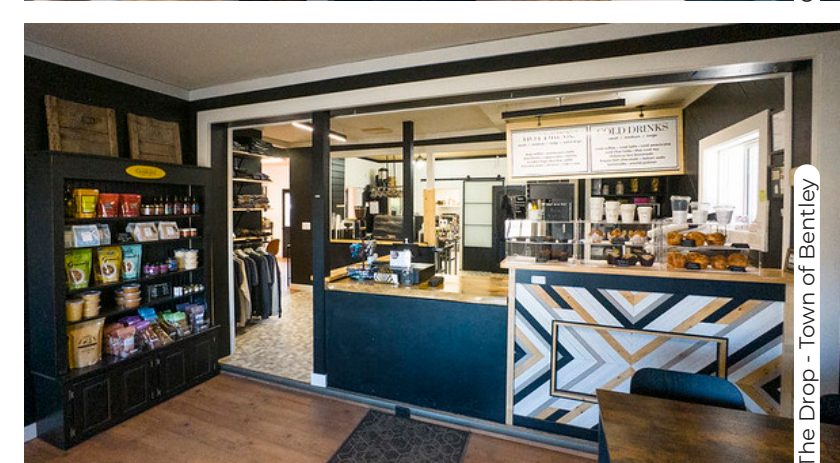
SOUPS, SANDWICHES AND MORE



2-4801 63 St Bay 2, Lacombe AB | (403) 786-8400



BLINDMAN BREWING



Blindman Brewing - City of Lacombe

Leto's Steakhouse Bar & Grill - City of Lacombe

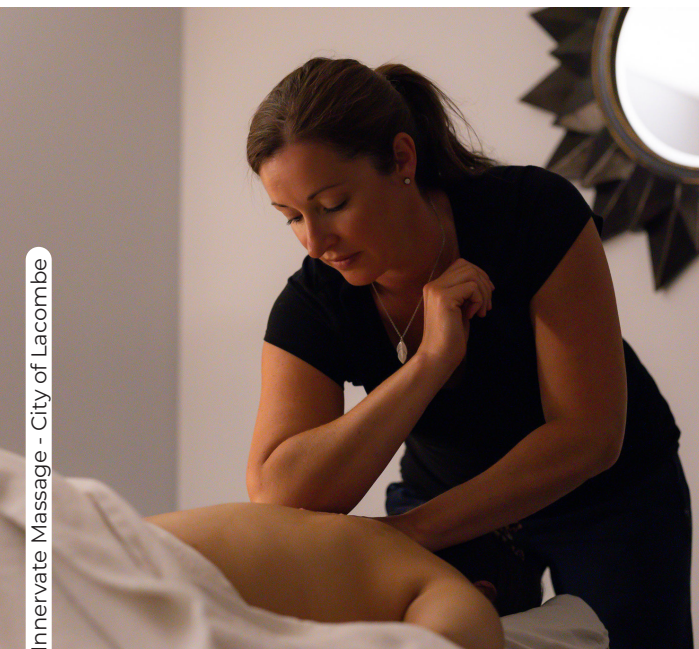
Cilantro & Chive - City of Lacombe

The Drop - Town of Bentley

Milly Oak Cafe & Catering - City of Lacombe



Healthfitters - City of Lacombe



Innervate Massage - City of Lacombe



Boujee Boho Market & Spa - City of Lacombe

HEALTH & WELLNESS

Your journey to feeling like the best version of you starts here! Look good, feel good, and keep your goals on track in 2026.

📍 CITY OF LACOMBE

Innervate Massage
 Feel as good as new
 A-5017 50 St | (403) 596 - 6267
 @innervatmassage
 innervatmassage.com

Healthfitters
 Your hub for all things healthy
 5015 50 Ave | (403) 786 - 9688
 @healthfitters
 healthfitters.ca

Boujee Boho Market & Spa
 Products that empower self care
 4960a AB-2A
 @BoujeeBohoMarket
 boujeeboho.ca

Holm Collective by Energi Wellness
 Holistic hub for whole-person wellness
 #105 4927 50 Ave | (403) 357 - 8158
 @holm.collective
 holmcollective.ca

📍 TOWN OF BENTLEY

Koda's Natural Healing
 Massage, cupping, reflexology, & rain drop therapy
 5016A 50 Ave
 (403) 872 - 7808
 @kodasnaturalhealing

📍 TOWN OF BLACKFALDS

Stride Physiotherapy & Wellness
 Time for care with Physio, Chiro, & Massage
 Unit #225, 4487 Broadway Ave
 (587) 797 - 2941
 stridephysiotherapy.ca
 @stridephysio.ab

ANNUAL EVENTS & FESTIVALS

Take a browse of the annual events happening here in the Lacombe Region! Time to start planning your next visit!

SPRING & SUMMER

Canada Day in Lacombe

Lacombe Farmers Market
 lacombefarmersmarket.ca

Evening Historic Walking Tour
 lacombemuseum.com

Alix Days Parade & Rodeo
 villageofalix.ca

Bentley Days
 bentleyagsociety.com

Alberta Open Farm Days
 albertaopenfarmdays.ca

Clive FunFest
 clive.ca

Lacombe Days
 lacombedays.ca

Encore Art Show & Sale
 lacombe.ca/artsale

Music In The Park
 lacombepac.com

L.A. Vintage Father's Day Show
 Lacombe Ag Grounds

FALL & WINTER

Clive Bullarama
 clive.ca

A Taste of Clive
 clive.ca

Hammer In Festival
 lacombemuseum.com

Harvest Supper
 lacombemuseum.com | ellisnaturecentre.ca

Lacombe Antique Show & Sale
 lacombemuseum.com

Light Up Lacombe
 lightuplacombe.com

Bentley Christmas with Santa
 townofbentley.ca

Christmas in the Village
 villageofalix.ca

Clive FrostFest
 clive.ca



Lacombe Days - City of Lacombe



Lacombe Days - City of Lacombe



Lacombe Days - City of Lacombe

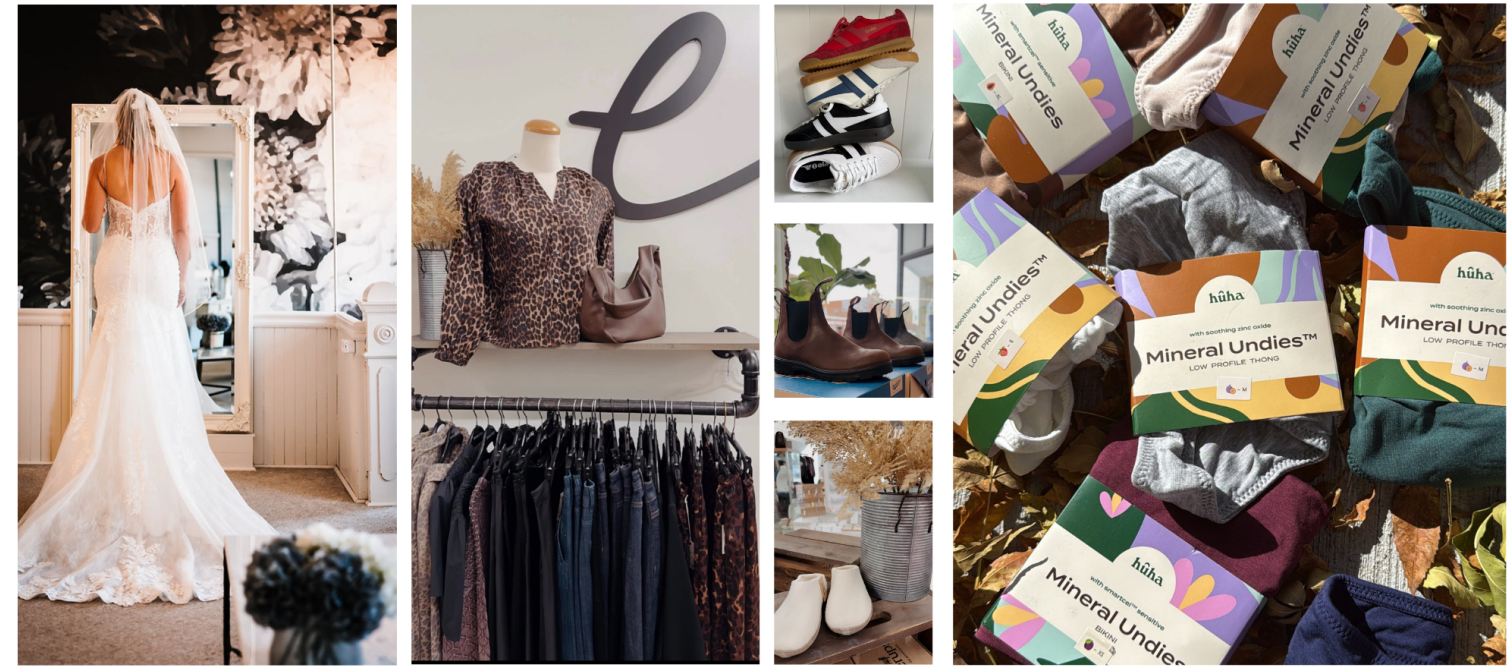
EXPERIENCE

LACOMBE LIFESTYLE AWAITS!

The Lacombe Region is nestled amongst the picturesque rolling hills and deciduous forests of Central Alberta 20 minutes North of the City of Red Deer.

Home to portions of three large lakes (Gull Lake, Sylvan Lake and Buffalo Lake) and numerous smaller ones, Lacombe Region offers a multitude of campground and recreational options. From Gull Lake in the West to Buffalo Lake in the East, the Lacombe Region has a little bit of everything. Tent or RV, paddle or float, fish or golf.

We have a spot for you!



elite
BOUTIQUE
L A C O M B E , A B

CLOTHING | FOOTWEAR | ACCESSORIES | BRIDAL | GRAD

4923 50 AVE, LACOMBE, AB
(403) 782 - 3312
ELITEBOUTIQUE.CA



YOU'RE OFFICIALLY INVITED!

PARADE | MUSIC IN THE PARK | SHOW & SHINE | LIVE ENTERTAINMENT | BLINDMAN BREWING SATELLITE PATIO | FIREWORKS

NEW EXPERIENCES, NEW EVENTS...
SAME TRADITIONAL FAMILY FUN!!!!



JULY 10TH - 12TH, 2026



4921 50 Ave, Bentley www.dropcoffee.shop (403) 896-9450

Stop on by and enjoy sitting in or for busy mornings take it to go!
Savour fresh, made in house, from scratch baking using locally sourced flour and enjoy small batch roasted coffee from Birdy Coffee Co. We also carry a wide variety of high quality teas, in house brewed ice teas, and a range of cold drinks on our menu!

Now operating the Bentley arena concession. Open farmers market Saturday's and online ordering is available at both locations.

TIN ROOF
event centre

📍 Your Central Alberta wedding venue
📍 41120 Range Rd 261 Lacombe, AB

Haunted Lakes Campground - Lacombe County



Michener Park Campground



Summerland RV Park - Gull Lake



Rochon Sands Campground



Reserve at AlbertaParks.ca

CAMPING SPOTS

Plan your trip and find the best camping spots for your family adventure! Whether you are planning to tent or RV, there is sure to be spots suited just for you! Call ahead, or book online to ensure your reservations are in order!

Michener Park Campground

Hwy 12 West side of the City of Lacombe
(403) 782 - 1250 | lacombe.ca

Sunset Legion Campground

Hwy 12 West to Hwy 20 North then Hwy 771 North
lacombelegion.com/campground | (403) 748 - 2200

Aspen Beach Provincial Park

Brewers Campground | (403) 748 - 1123
Lakeview Campground | (403) 784 - 4066
Hwy 12, Gull Lake | albertaparks.ca

Burbank Hall & Campground

393 Burbank Rd, Town of Blackfalds, AB
(403) 885 - 5335

Bentley Municipal Campground

(403) 748 - 4044

Summerland RV Park

2 km West of the City of Lacombe on Hwy 12
(403) 748 - 4855 | summerlandrvpark.com

The Nursery Golf & Country Club

41101 RR 270, Lacombe County
(403) 782 - 5400 | nurserygolf.com

Haunted Lakes Campground

Northeast off Hwy 601, Lacombe County
hauntedlakesgolf.com | (403) 747 - 2330

Alix Lake Campground

villageofalix.ca

Rochon Sands Provincial Park & Campground

(403) 742 - 4338 | rochansands.net/rspp

Narrows Provincial Recreation Area & Campground

On Buffalo Lake near Hamlet of Mirror
(403) 742 - 4338 | rochansands.net/npra

🔍 **Looking for more places to stay?**
Visit page 47 for a list of accommodations

FISHING SPOTS

Len Thompson Trout Pond

5910 Len Thompson Dr, City of Lacombe
North end of Len Thompson Drive. Featuring a fully accessible dock, World's Largest Fishing Lure, and park for the kids!

Powell Pond

Just North of the junction of 53 Ave and 39 Street in the City of Lacombe.

Wilson's Beach

Gull Lake, AB - 15 minutes West of the City of Lacombe | wilsonsbachcamground.com
@wilsonsbachcamground

Burbank Park

Blackfalds, AB. Camping, day use, fishing access, hall | @burbankab

Ray's Pond

East of the Town of Eckville at the intersection of Hwy 11 and Range Road 3-0

Hansen's Reservoir

AB-766, Eckville, AB T0M 0X0 | South of Hwy 11 on SH 766 - 3kms on the West side of the road

Tees Trout Pond

North of the Hamlet of Tees on Highway 821

The Narrows Provincial Recreation Area

Buffalo Lake | 21 km North of the Town of Stettler

Events nearby:

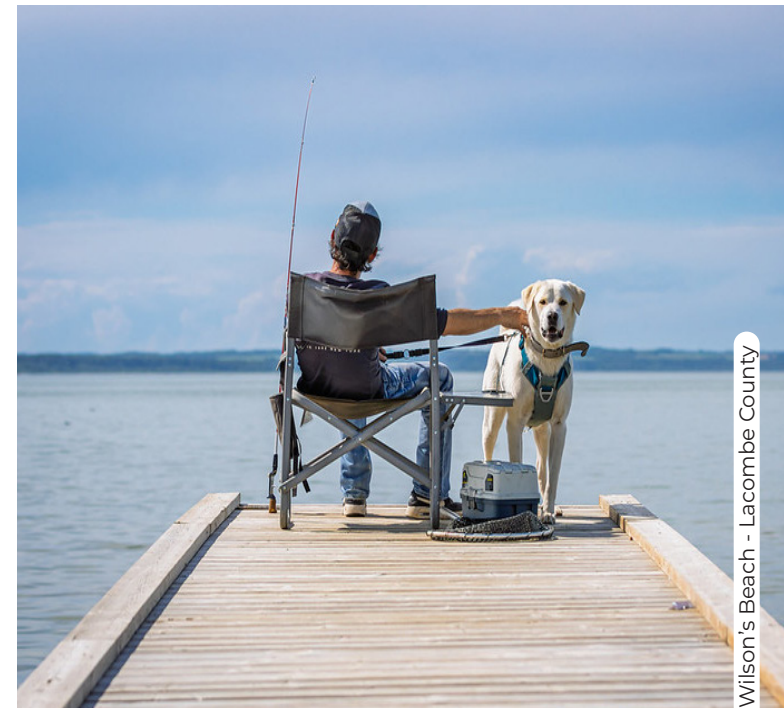
Big Jack Classic - annual fishing derby at Buffalo Lake. Catch and release Northern Pike only. Juniors and seniors divisions.

Types of fish you can find in the Lacombe Region:

- | | |
|---------------|-----------|
| Rainbow Trout | Pike |
| Brook Trout | Whitefish |
| Tiger Trout | Perch |
| Walleye | |



Len Thompson Trout Pond - City of Lacombe



Wilson's Beach - Lacombe County



Pack the tackle box!



Two Top 100 Golf Courses,
RV Getaways & Great Dining.

golfnorth.ca/wolfcreek | 403-783-6050

GOLFING SPOTS

Mark down these locations and plan your next golfing itinerary. With courses to suit all skill sets, the only thing you will need to do is schedule when you want to visit! By the end of your itinerary, your swing will be perfected!

Joe's Mini Golf

40325 RR 262, Gull Lake, AB | joesminigolf.com
Summerland RV Park | summerlandrvpark.com
(403) 748 - 4855

The Nursery Golf & Country Club

41101, Range Rd 270, Lacombe County
nurserygolf.com | @thenurserygolfclub

Gull Lake Golf Course

2 Sunnyside Dr, Rimbey, AB
gull-lake-golf.ca | @gulllakegolfcoursealberta
(403) 843 - 3322

Haunted Lakes Golf Course

Northeast off Hwy 601, Lacombe County
hauntedlakesgolf.com
(403) 747 - 2330

Rochon Sands Disc Golf Course

Rochon Sands, AB

Disc Golf Course

Wilson's Beach along Gull Lake, AB

Lacombe Golf & Country Club

6000 50 Ave, City of Lacombe
golflacombe.com

Rosedale Valley Disc Golf Course

6415 University Dr, College Heights
Burman University | City of Lacombe

The Range Virtual Golf

4714 Hwy 2A, City of Lacombe
@therangelacombe

Wolf Creek Golf Resort

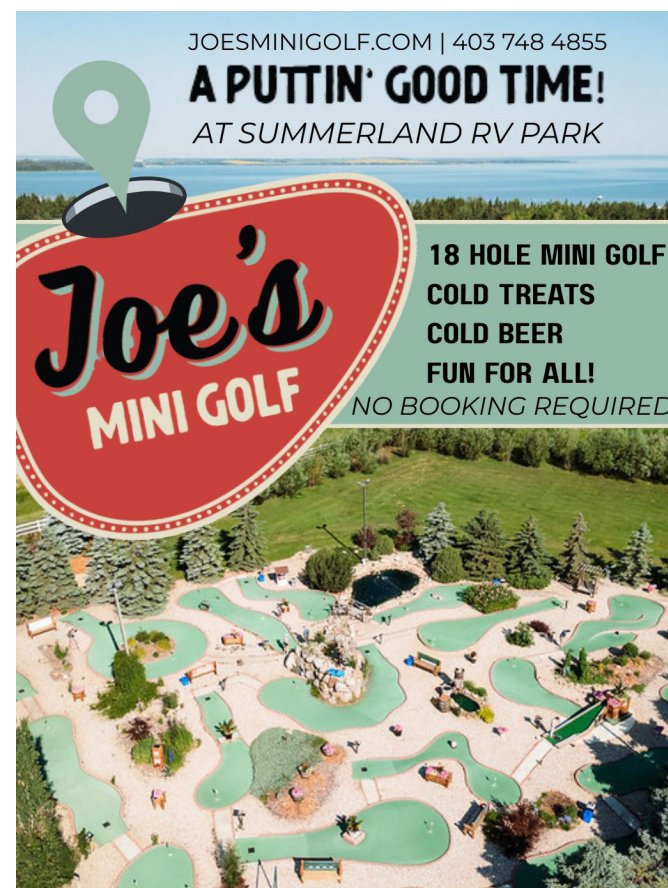
RR 3, Site 10, Ponoka, AB
golfnorth.ca/wolfcreek
@wolfcreekgolf



The Nursery Golf & Country Club - Lacombe County



Gull Lake Golf Course - Lacombe County



BEACHES & LAKES

BEACHES

Aspen Beach Provincial Park & Day Use Area

Ebeling Beach is good place to take the family on a hot weather day. With a playground on the beach and a small store where you can get food and ice cream, it's a great summertime spot.

Sandy Point Beach Gull Lake

A very picturesque beach on the West side of Gull Lake, Sandy Point is a place where you can enjoy the beauty of Gull Lake year round.

Rochon Sands Provincial Park at Buffalo Lake

Lake life under the stars! (403) 742 - 4338
Rochon Sands: rochonsands.net/rspp
Narrows: rochonsands.net/npra

Alix Lake Beach

If you are looking for a family-friendly lake with sandy beach and a playground, this lake is perfect for you.

LAKES

Alix Lake

Enjoy a small and private lake situated next to the Village of Alix. The walking areas around the lake and campground are gorgeous!

Cranna Lake, Elizabeth Lake, and Barnett Lake

The City of Lacombe is home to three gorgeous lakes, from hiking and biking trails in the Summer, to skating and tobogganing during the Winter season. Come and visit a lake for a day and have an outdoor adventure without missing the city vibe.

Lacombe Lake

Situated just South of the City of Lacombe, this lake is a great location do enjoy time paddling, kayaking, and enjoying a walk along the Trans Canada Trail.

Sylvan Lake

A great spot to go paddle-boarding, kayaking, sailing, and even diving in the lakeside community: Town of Sylvan Lake.

Gull Lake

Visit for the day or plan a camping trip for the whole weekend with the family! Explore the beaches and hiking trails in the Summer months, and plan on going ice fishing and cross country skiing in the Winter.

Buffalo Lake

To the East between the Lacombe County, Camrose County, and the County of Stettler lines: spend your days swimming, fishing, and boating.



Lacombe County is home to incredible beaches and lakes ideal for a weekend getaway.

Escape from the city life and explore Central Alberta with your family and friends. From walking on soft sand, fishing and golfing in the Summer to ice fishing, ice skating and tobogganing in the Winter, you will be able to enjoy the outdoors.

STAND UP PADDLE BOARD

LESSONS RENTALS

GULL LAKE SUP SCHOOL

WWW.GULLLAKESUPSCHOOL.COM

LEARN TO FLY

GENERAL LEE AVIATION

403-768-3777 generalleeeaviation.com

- Private & Commerical Pilot Licenses • Ratings • Discovery Flights • Lacombe & Wetaskiwin



2026 LIVE STANDARD BRED RACING

CASINO OPEN 7 DAYS A WEEK!

MARCH						
S	M	T	W	T	F	S
1	2	3	4	5	6	7
8	9	10	11	12	13	14
15	16	17	18	19	20	21
22	23	24	25	26	27	28
29	30	31				

JULY						
S	M	T	W	T	F	S
			1	2	3	4
5	6	7	8	9	10	11
12	13	14	15	16	17	18
19	20	21	22	23	24	25
26	27	28	29	30	31	

August						
S	M	T	W	T	F	S
						1
2	3	4	5	6	7	8
9	10	11	12	13	14	15
16	17	18	19	20	21	22
23	24	25	26	27	28	29
30	31					

September						
S	M	T	W	T	F	S
						5
6	7	8	9	10	11	12
13	14	15	16	17	18	19
20	21	22	23	24	25	26
27	28	29	30			

♣ 1:10 p.m. Mountain Time

[Facebook.com/thetrackon2](https://www.facebook.com/thetrackon2) 40309 Range Road 272 Lacombe County, Alberta, Canada Ph: 403-786-3122

PIKOPAK PRODUCE
EST. 1987
LACOMBE · ALBERTA

LOCAL GREENHOUSE VEGGIES GROWN YEAR-ROUND

Visit our farm store by Gull Lake

Buy fresh veggies direct from our greenhouses
Lots of amazing items from local vendors
Self-service, card or cash
Open 24/7
Also find our veggies at over 30+ grocery stores across Central Alberta

STRAIGHT OUTTA GULL LAKE

28118 AB-12 GULL LAKE, AB 403-748-4555

SCHOLING'S PRODUCE

Farm fresh produce & so much more!

Visit our farm store

[f](https://www.facebook.com/scholingproduce) 41006 HWY 2A
403 782 7380

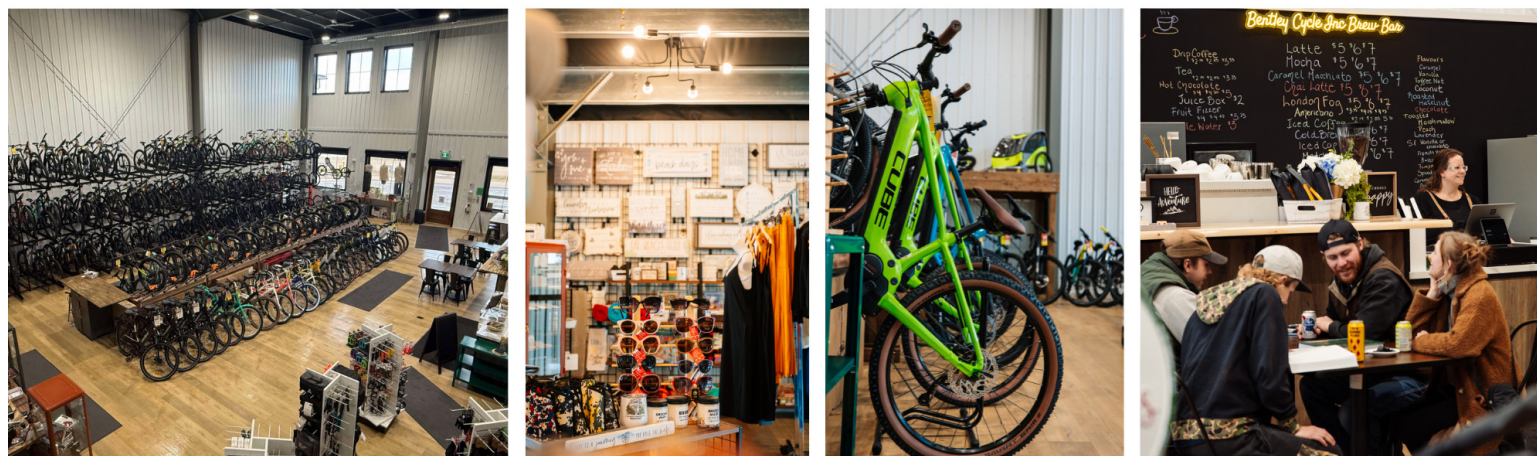


EXPLORE

EXPLORE, HIKE, BIKE, RUN, WALK AND PLAY IN LACOMBE

The natural beauty of Central Alberta is highlighted best 20 minutes North of the City of Red Deer in the Lacombe Region as it offers multiple natural hiking areas that are easy to navigate and welcoming to beginners.

The beaches and lakes of the region make for an easy family day trip with many offering amenities like picnic tables, public washrooms, and BBQ pits. The trail networks between the communities of the region allow for even the most novice explorer to have an adventure and discover why the Lacombe Region is worth visiting time and time again.



4925 50th Ave Bentley AB

(403) 748-3176



HIKING TRAILS

Explore breathtaking natural areas, and endless pathway networks in the Lacombe Region.

Alix Lake Nature Trail

6 km trail around Alix Lake - start your exploration at Lake Street or the Lakeview subdivision found in the Village of Alix.

Kuhnen Natural Area

The Kuhnen Natural Area is located South of the Village of Alix and is accessed off Range Road 23-0, South of Hwy 11. The 65 acres of forested land offers lookout points onto the river valley and a trail that leads down to the water. lacombecounty.com

Bentley to Gull Lake Trail

For hiking and biking! 7 km of paved trail along Hwy 12 from Aspen Beach Provincial Park to the Town of Bentley.

Cranna Lake

This 2 km family-friendly is a popular paved trail that loops around Cranna Lake. lacombe.ca/206/Trails

Kuhnen Park

63 km of nature trails that wind their way through the forest. Located North of the Town of Blackfalds on Hwy 2A.

Elizabeth Lake

5 km loop trail in the City of Lacombe. A popular lake for those looking for birding, hiking, and mountain biking. Find several benches along the way to enjoy the scenery. lacombe.ca/206/Trails

Trans Canada Trail

9 km paved trail starting at the Research Station Grounds, located at the intersection of Hwy 2A and C&E Trail in the City Lacombe. This pathway will take you through farmland, around Lacombe Lake and past Kuhnen Park.

JJ Collett Natural Area

18 km beautiful hiking area for all ages with interconnected trails. Access from Hwy 2A at Twp Rd 420. | jjcollett.com

Mary & Cliff Soper Natural Area

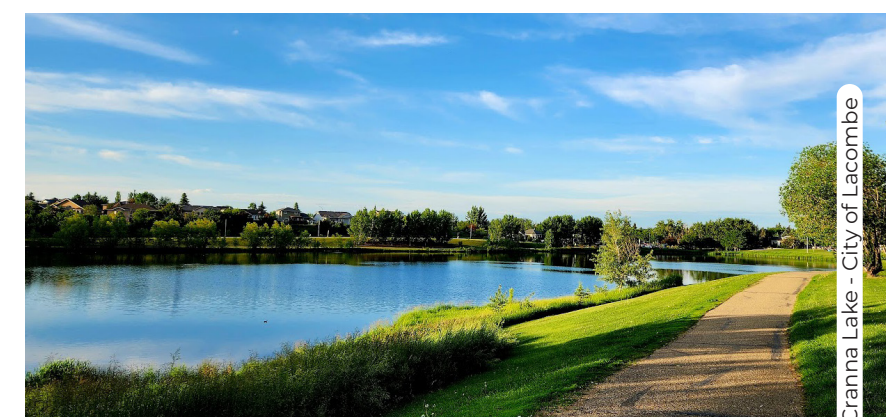
25 acre open area located East of the Town of Blackfalds. It will remain in its natural state and it will be open to the public for passive recreational purposes.



Trans Canada Trail - Lacombe County



Kuhnen Natural Area - Lacombe County



Cranna Lake - City of Lacombe

ELLIS NATURE CENTRE

VISIT. RECHARGE. EXPERIENCE.



EXPLORE

www.ellisnaturecentre.ca
info@ellisnaturecentre.ca or 403 885 4477
39502 Range Rd 260, Lacombe County, T4L 1W7

THINGS TO DO ON A SUNNY DAY

The Lacombe Region has so many things to do and see in every season of the year - with Summer being a peak time to explore!

Explore Ellis Nature Centre

Walk around the farm admiring the sights and sounds of nature, pet a goat, and be sure to stop at the gift shop to find a unique souvenir.

Stroll the Alix Nature Trail

If you love discovering new paths to wander, head to the Village of Alix to spend time along the Alix Nature Trail and admire the day!

Stay at the Haunted Lakes Golf Club and Campground

Bring along your cookstove and enjoy camping next to next to Haunted Lake with a beautiful 9-hole golf course characterized by views of the lake.

Visit Fahey's Fruit Stand & Garden Market

Visit the Village of Clive and stock up on those hard-to-find fresh products.

Discover Billyco Junction Gardens

Enjoy spending time at this local u-pick location that grows a variety of organic fruits and vegetables.

For even more adventures:

There's always more to be explored - try the East Gull Lake Trail for another path to wander this Summer.



Ellis Nature Centre - Lacombe County

THINGS TO DO ON A COLD DAY

A bit on the chilly side? There is always something for the whole family to explore, with options to make it fit the day!

Go play in the snow!

Visit here to find skiing, snowboarding, and more!
-> Canyon Ski Resort (30 mins South of the City of Lacombe)
-> Medicine Lodge Ski Hill (11 kms West of the Town of Bentley) | @medicinelodgeski | medicinelodgeskihill.com (403) 748 - 2025

Warm up with a hot drink

The Lacombe Region is filled with places to warm up after a day exploring outdoors! Flip to pages 28 and 29 to see a full listing of all the culinary spots.

Hike, Bike, or Walk!

Nothing beats some fresh air out on the trails and paths. Take the whole family or pair up with a friend and enjoy the day! Up your game with snow shoeing, cross country skiing, or fat biking.

Catch a festival:

Plan your visit around the local events of the Lacombe Region. See page 31 for the annual listings! A well timed shopping trip will have you enjoying festive treats and drinks, help you check off your holiday checklist, and catch a fun event in the mix! Top it off with a few outdoor adventures to end the trip - depending on the temperature you may find a outdoor skating rink ready to go!



Elizabeth Lake - City of Lacombe



Find a local outdoor rink to skate at! Cranna Lake - City of Lacombe



Medicine Lodge Ski Hill - Lacombe County



REDS SOURCE FOR SPORTS
5018 50 AVE, LACOMBE, AB. (403) 782-7357



Lacombe Memorial Centre Light Display - City of Lacombe

WINTER ATTRACTIONS

On the hunt for even more to explore and discover during the Winter season? Add these stops to your list.

Spend the holidays in Lacombe Region:

One of the best times to find those last minute items, stock up on must-haves, and enjoy fun Winter activities with the family.

- City of Lacombe: Light Up Lacombe
- Town of Bentley: Christmas with Santa
- Village of Alix: Christmas in the Village
- Village of Clive: Clive FrostFest

Activities:

Go ice fishing at Gull Lake - close to the Town of Bentley.

Find a outdoor rink to go skating at - Cranna Lake and Royal Oak are two found in the City of Lacombe. Find more locations: www.lacombe.ca/159/Public-Skating

Enjoy a drive or walk around the hamlets, villages, towns, or city to enjoy to holiday lights put up by the community and municipalities!

SUMMER ATTRACTIONS

Family friendly fun around every corner is ready to help you make the most of every Sunny day!

Ellis Nature Centre

Wildlife conservation & nature centre, and cafe.
39502 RR 260, Lacombe County, AB
ellisnaturecentre.ca | (403) 885 - 4477
@EllisNatureCentre

Joe's Mini Golf

Family-friendly 18-hole mini golf course, located within the Summerland RV Resort near Gull Lake.
40325 RR 282 Gull Lake, Lacombe, AB
joesminigolf.ca | (403) 748 - 4855

Kraay Family Farm

Home of the Lacombe Corn Maze, Inc.

A farmyard adventure park for the whole family, featuring over 50 attractions!
Site 6 Box 9 RR 1, Lacombe, AB
Kraayfamilyfarm.com | (403) 754 - 5502
@kraayfamilyfarm

Share with us! We want to see your adventures! Tag @lacombe_tourism for a chance to be featured!

Canyon Adventure Park

Head to Canyon Ski Resort and spend the day exploring the adventure park, alpine coaster, and don't miss out on Summer tubing.
38433 RR 264, Red Deer County, AB
canyonski.ca/summer/ | (403) 346 - 5588
@canyonskiresort

Track on 2

Off to the races for the day!
What you can find here: Casino | Standard bred Horse Races | The Funky Monkey Kitchen & Bar
40309 RR 272, Lacombe County, AB
thetrackon2.com | (403) 786 - 3122

Rimbey Kinsmen Motorsports Park - Central Alberta Raceways

A full outdoor racing facility: 1/4mile Drag Strip, 1/8 mile Dirt Oval, Mud Bogs, & Mega Trucks.
6700 40 St, Rimbey, AB | (855) 746 - 2397
@caraceways | @centralalbertaracewaysdrags

Tin Roof Event Centre

Affordable Central Alberta wedding venue
41120 RR 261, Lacombe County, AB | (403) 352 - 9591
tinroofeventcentre.com/alberta-wedding-venue
@tinroofeventcentre

SOAPY'S

CAR WASH

Lacombe's Premier Carwash

9 Self Serve Bays
1 Touchless Automatic
1 60ft RV Bay

4876B - 46 Street, Lacombe AB

check us out! www.soapys.ca

FUN FOR EVERYONE AT RIMBEY'S AUTO RACETRACK!

SCAN FOR ALL RACE AND EVENT INFO!



DON'T MISS THESE EVENTS!
 IDIOTS IN CARS CANADA DAY - CARNIVAL AT CAR
 ROCK THE TRACK & MORE!
 BEER GARDENS & CONCESSION CAMPING

FOR EVEN MORE ADVENTURES

General Lee Aviation

Pilot training and flight school
3910 63 Ave Unit 99 | City of Lacombe
(403) 768 - 3777 | generalleeeaviation.com

Shelly's Sun & Sand Travel

Discover even more things to do and see
shelleysunandsandtravel.ca

Thompson - Pallister Bait Co. Ltd.

Where to start your fishing adventures!
Quality Canadian made fishing tackle since 1929
5860 Len Thompson Dr, Lacombe, AB
(403) 782 - 3528 | lenthompson.com
@lenthompsonlures

Gull Lake SUP School

Stand Up Paddle Board Rentals & Lessons across Gull Lake. Reserve online and pickup your boards at Summerland RV Park | (403) 896 - 6440
www.gulllakesupschool.com | @gulllakesupschool

Lacombe Art Guild

Time to get creative! Drop by for an art class, lesson, workshop, plein air event, and more! Ages 16+
lacombeartguild.ca | (403) 741-7360
@lacombeartguild



Joe's Mini Golf - Lacombe County



Ellis Nature Centre - Lacombe County



Stop by our taproom and enjoy a pint from our 24 taps, patio, Local Taqueria, and friendly staff.



blindmanbrewing.com
 f @blindmanbrewing
 t @blindmanbrewery

ACCOMMODATIONS

When you're on the road and looking for a place to stay the Lacombe Region you can add these spots to your list for quick booking! Stay for an evening, a weekend, or stay awhile!

HOTELS, MOTELS, B&B

Travelodge by Wyndham Lacombe
 5402 Highway 2A, Lacombe, AB
 (403) 782 - 7826

Best Western Plus Lacombe Inn and Suites
 4751 63 St, Lacombe, AB
 (403) 782 - 3535

Elizabeth View Bed and Breakfast
 37 Wildrose St, Rosedale Valley, AB
 elizabethview.ca

The Elliott
 Historic downtown luxury suite
 2 Livingston Close, Lacombe, AB
 (403) 588 - 0240

Alix Inn
 4704 51 Ave, Alix, AB | (403) 747 - 2236



Lacombe Inn & Suites
 (403) 782-3535 | 4751 63 Street
 Lacombe, Alberta

Come stay with us!



TRUST YOUR LOCAL LACOMBE AND AREA REALTORS®

No matter whether you are selling your home, looking to buy your forever dream home or in need of pasture land or commercial space, we can assist you **hassle-free** through the real estate process.

We Specialize in the Following!

- *Residential
- *Agricultural
- *Commercial

MEET YOUR LOCAL LACOMBE & AREA REALTORS

- Bob Wilson 403-304-4601
- Ken Poffenroth 403-350-0971
- Nick Leshner 403-318-2930
- Dawn Parent 403-391-3296
- Debra Grabo 403-369-1688
- Lori Hellofs 403-396-1419
- Brad Hellofs 403-396-0659



We are community members, volunteers and your neighbours.

403-782-4301 rxlacombe@remaxreddeer.com www.remaxlacombe.com

LIVE HERE

RE/MAX Real Estate Central Alberta
 5035 50 St Unit 101, Lacombe, AB
 (403) 782 - 4301 | lacombe.remax-centralalberta.ca

RESET AFTER A ROAD TRIP

Soapy's Car & RV Wash
 Lacombe's premier carwash
 4876B 46 St, Lacombe, AB
 soapys.ca | @SoapysLacombe
 (403) 782 - 6268

 **Looking for camping spots?**
 Visit page 34



The Elliott - City of Lacombe



From East to West, our big blue skies, long scenic roads, and small town charm awaits you.

Route 12 will take you from the Town of Rocky Mountain House to the Town of Castor while passing through some of Lacombe County's hidden gems - each providing their own reason to make a pit stop.

From restaurants to fruit stands and lakes to golf courses to Alberta's finest brewery, there's plenty to see and do.

Whether you're riding solo or with a group, Route 12 makes for a perfect day trip. Scan the QR code to find out more.

Hit the road!



ROUTE 12 EXPERIENCES YOU CAN'T MISS!

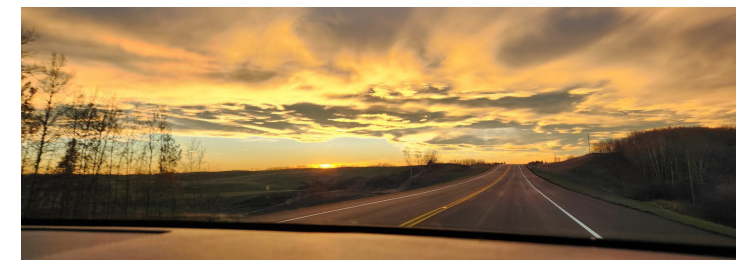
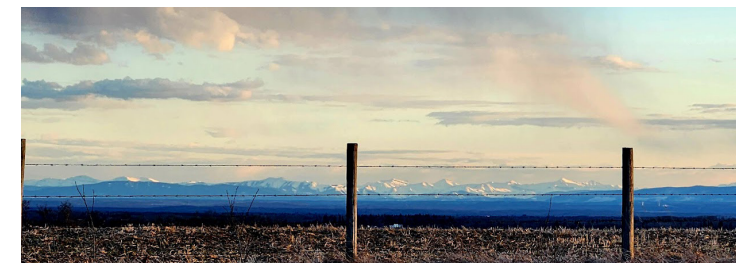
Route 12 offers a diverse range of attractions, outdoor adventures, historical sites, and cultural discoveries that will make your journey through Central Alberta truly memorable!

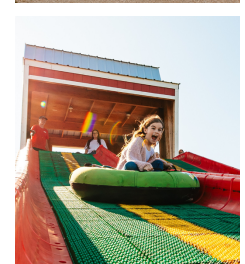
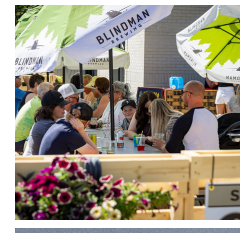
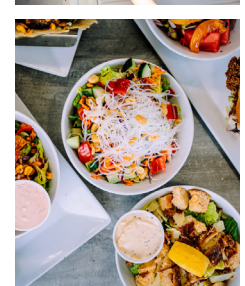
- 1 Explore the Rocky Mountain House National Historic Site: Begin your journey in the Town of Rocky Mountain House. Discover the fur trade era, explore the reconstructed trading post, and learn about the Indigenous history of the region.
- 2 Visit the Bentley Museum: In the Town of Bentley delve into the local history and heritage. The museum showcases artifacts and exhibits that depict the pioneering spirit of the area.
- 3 Experience Gull Lake: Located near the City of Lacombe, Gull Lake is a popular destination for outdoor activities. Spend a day at the lake, go fishing, indulge in watersports, or relax on the sandy beaches.
- 4 Discover Historic Downtown Lacombe: Take a stroll and admire the well preserved historic buildings, browse local shops, and visit the Lacombe Blacksmith Shop Museum, which offers a glimpse into the City of Lacombe's blacksmithing past when it was once a town.
- 5 Visit Alix Lake: Located in the Village of Alix, this tranquil spot is perfect for boating and picnicking. Enjoy the serene surroundings and immerse yourself in nature.
- 6 Attend the Village of Clive FunFest, and enjoy the annual festivities of the day. Be sure to catch the parade!
- 7 Explore the Stettler Town and Country Museum: Discover the Town of Stettler history and it's surrounding areas. Explore exhibits showcasing pioneer artifacts, agricultural equipment, and historical buildings.
- 8 Experience the annual Town of Castor Winterfest and spend your weekend enjoying outdoor activities, chilli cookoffs, weigh in on the largest Winter squash, admire the ice carvings, and take home a new treasure from the market.



Looking for more info?

Visit lacombetourism.com/route-12





OUR VISION

Lacombe Regional Tourism will establish the Lacombe County as a hyper-local destination of choice at the crossroads of Alberta, where people, parkland and prairie come together to explore the unexpected and escape the everyday.



TALK TO US!

VISIT OUR WEBSITE:
LACOMBETOURISM.COM



Share your journey with us using this hashtag for a chance to be featured:



#visitlacomberegion

BECOME A MEMBER

Register today using the QR code to the right!

- \$250 Regular Business Membership
- \$150 Non-Profit Associations



EXPLORE OUR COMMUNITY:

Lacombe Regional Tourism works to support and promote its communities locally and provincially by marketing and advertising the region as a tourism destination. We strongly encourage businesses involved with tourism to become partners and engage with the regional tourism industry.

DINE, SHOP, AND DISCOVER LACOMBE'S CULTURE

Escape the hustle and bustle with a trip to visit the hamlets, villages, and towns that make up the Lacombe Region.

Here you can find a diverse mix of old and new, complete with rolling farmlands and home cooked meals. Visit boutique shops mixed with thrift shops, filled to the brim with hidden treasures.

HIKE, BIKE, RUN, WALK AND PLAY IN THE LACOMBE REGION

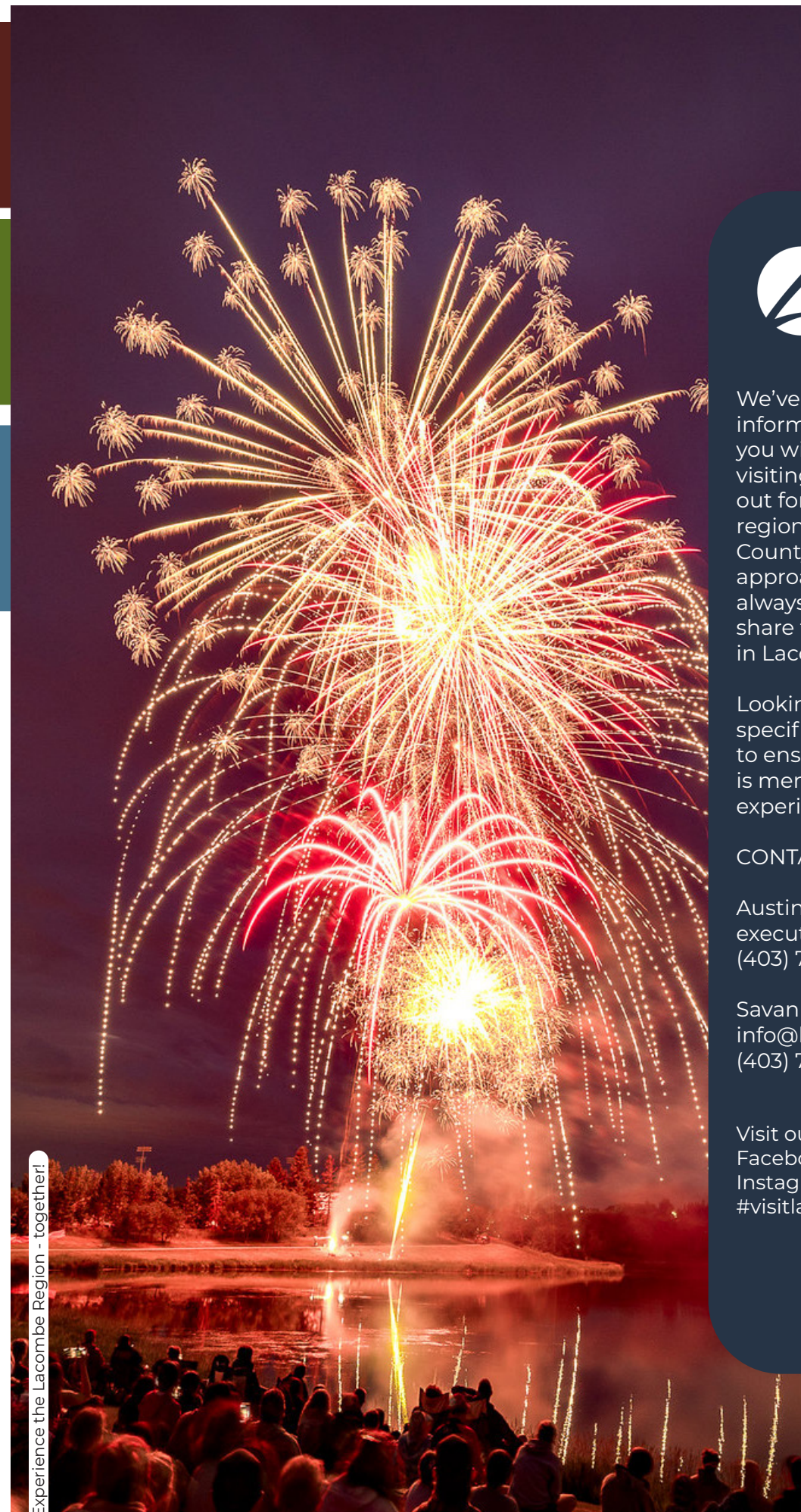
Explore the outdoors! Natural hiking areas that are easy to navigate and welcoming to beginners.

The beaches and lakes of the region make for an easy family day trip with many offering amenities like picnic tables, public washrooms, and BBQ pits. The trail networks between the communities of the region allow for even the most novice explorer to have an adventure and discover why the Lacombe Region is worth visiting time and time again.

LACOMBE LIFESTYLE AWAITS!

The Lacombe Region is nestled amongst the picturesque rolling hills and deciduous forests of Central Alberta, and offers a multitude of campground and recreational options. From Gull Lake in the West to Buffalo Lake in the East, the Lacombe Region has a little bit of everything.

Tent or RV, paddle or float, fish or golf. We have a spot for you!



Experience the Lacombe Region - together!



We've transformed our van into a regional information centre! Working to provide you with all the details you will need when visiting Lacombe County. Keep an eye out for our van at events throughout the region, as we bring the best of Lacombe County directly to you. Don't hesitate to approach us when you spot us - we are always thrilled to chat with visitors and share the amazing places you can explore in Lacombe County under the sun!

Looking for more information or have specific questions? Our team is dedicated to ensuring your visit to Lacombe County is memorable and filled with incredible experiences.

CONTACT US

Austin Weaver | Executive Director
executivedirector@lacombetourism.com
(403) 782 - 1046

Savannah Lalonde | Marketing Coordinator
info@lacombetourism.com
(403) 741 - 7360

Visit our website: lacombetourism.com
Facebook @LacombeRegionalTourism
Instagram @lacombetourism
#visitlacomberegion

Map Contributor @OpenStreetMap
openstreetmap.org/copyright

EXPLORE

DOWNTOWN LACOMBE



COMFORT FOOD WITH A TWIST
CREATIVE & CRAFT FOCUSED DRINK MENU

5021 50TH STREET LACOMBE . 403.782.2882 . CILANTROANDCHIVE.CA



CILANTRO AND CHIVE

FRESH • SIMPLE • EATS